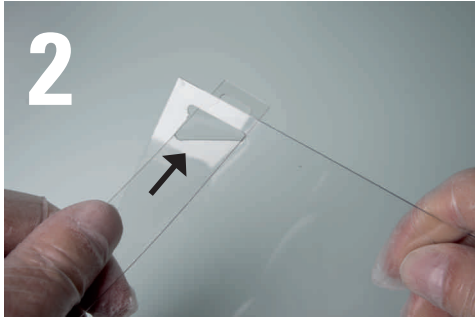


You receive a visor shield, a headband as well as padding to affix or stretch, according to design.



The curvature allows the air to circulate and creates sufficient space, e.g. for those people who wear spectacles or for an additional face mask.

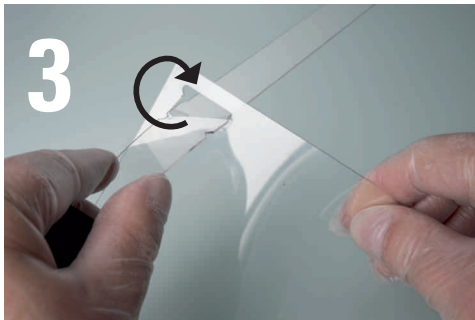


First of all, insert the headband with the individual notching into the first opening.

From inside to the outside, inclined, according to the correspondingly larger opening.



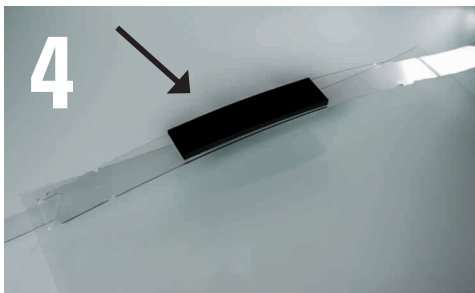
You can now fix the headband to suit your head size in the same way.



The headband can now be firmly locked in place with a rotary movement.



Afterwards everything can also be adjusted.



The self-adhesive padding can now be attached centrally to the headband from the inside.



Finished.



After this insert the other side of the headband and lock in place in the same way.



Resistant to common disinfectants and easy to clean with a soft cloth and a little glass cleaner.

Stay healthy!