

SAWS, PIPE CUTTERS

With the handy pistol shape of the SUPER pipe cutter, pipes which are already laid can be easily shortened. With minimum force, the...



...versatile blade is guided through the material to be cut. It provides precise right angle cuts without burrs or deformation.



The patented and particularly high performance pipe cutter with ratchet mechanism means it is no longer necessary to completely rotate the pipe to be cut.



The innovative metal saw bow with 2-component plastic handle is made in ultra-lightweight design and...



...provides space for a number of replacement saw blades in the metal frame.

1

2

3

4

5

6

7

8

9

10

11

12

13

14

15

16

17

18

19

20

21

22

23

24

25

26

Design	Size mm	PU	Article no.
--------	---------	----	-------------

PUK pocket saws Vario

innovative small saw bow of 10 x 5 mm flat steel, high-gloss zinc plating, with ergonomic, glass fibre reinforced plastic handle, blade tension via embedded knurled screw. 65 mm high sawing space. In two different lengths, each with universal saw blade.

Vario 150	Weight 165 g	260	1	12 0515
Vario 200	Weight 177 g	310	1	12 0520

PUK pocket saws

Span width 150 mm, with metal cutting saw blade

with adjustable polished wooden haft	1	12 0500
with solid, lacquered wooden haft	1	12 0502

PROFI pocket saw

with universal blade

Span width 150 mm	1	12 0490
-------------------	---	---------

1000 V saw bow

fully insulated

Span width 150 mm	250	1	12 0700
-------------------	-----	---	---------

Bulk saw blades

according to DIN 6494 Form C, 150 mm length, 6 mm width, 0.4 mm thickness

Wood cutting saw blade for hard and soft woods, chipboard and hardboard, soft plastic, etc.

Tooth pitch 1.8 mm (14 teeth per inch)	150	1	12 0504
as above but for Vario 200	200	1	12 0505

Universal saw blade for steel, aluminium, nonferrous metals, fibre glass, plastic conduit and pipes, mineral, Rigips and fibre-cement slabs

Tooth pitch 1.0 mm (25 teeth per inch)	150	1	12 0506
as above but for Vario 200	200	1	12 0507

Metal cutting blade for all metals, non-ferrous metals (copper), stainless steel, special alloys, Plexiglas® and plastics

Tooth pitch 0.8 mm (32 teeth per inch)	150	1	12 0512
as above but for Vario 200	200	1	12 0513

Saw blade set

according to DIN 6494 Form C, 150 mm length, 6 mm width, 0.4 mm thickness. Contents: Each contains 3 universal saw blades (tooth pitch 1.0 mm (25 teeth per inch)), metal cutting saw blades (tooth pitch 0.8 mm (32 teeth per inch)), fine metal cutting saw blade for especially fine, burr-free cuts even in very thin sheets (tooth pitch 0.5 mm (50 teeth per inch)), wood cutting saw blade (tooth pitch 1.8 mm (14 teeth per inch))

1	12 0508
---	---------



Design	Size mm	PU	Article no.		
--------	---------	----	-------------	--	--

Metal saw bow

innovative metal saw bow with 2-component plastic handle in ultra-lightweight design. Ergonomic saw line, fibre glass reinforced, total length 400 mm, suitable for a wide range of tool cases (bottom shell), integrated key and blade magazine, powder-coated, PUK bi-metal saw blade 300 mm, 24 teeth/inch

		1	12 0530		
--	--	---	---------	--	--



Metal saw bow

especially light and simultaneously very stable metal cutting saw for 300 mm saw blades. Made of die cast aluminium in an ergonomic design, with soft rubber inserts in the handle and front grip. High cutting precision of the blade in straight and 40 degree position due to captive locking pins. Blade can be tensioned up to 800 N by turn-lock fastener in the handle. Delivery incl. a bi-metal cutting saw blade.

Span width 300 mm	Weight 650 g	1	12 0602		
-------------------	--------------	---	---------	--	--



Metal saw bow

Hacksaw with innovative quick release on the two-component handle for single-sided saw blades DIN 6494 Form A. With improved grip due to nonslip plastic and additional front slide protection, glossy chrome-plated, with captive locking pins.

Span width 300 mm	520	1	12 0600		
-------------------	-----	---	---------	--	--



Metal saw bow

adjustable, made of right-angle steel tubing, material thickness 16 x 10 mm, red powder coating, with attachment pin

Span width 300 mm		1	12 0607		
-------------------	--	---	---------	--	--



1000 V saw bow

fully insulated hacksaw with innovative quick release on the handle for single-sided saw blades DIN 6494 Form A. With improved grip due to nonslip plastic and reduced weight.

Span width 300 mm	Weight 785 g	520	1	12 0702	
-------------------	--------------	-----	---	---------	--



Metal cutting saw blade

according to DIN 6494 Form A, single-sided

Material	Dimensions mm	Teeth per inch			
HSS-CO	300 x 13 x 0.65	24	1	12 0608	

Form B, double sided

Material	Dimensions mm	Teeth per inch			
WS	300 x 25 x 0.8	24	1	12 0614	



1

2

3

4

5

6

7

8

9

10

11

12

13

14

15

16

17

18

19

20

21

22

23

24

25

26

Design

Size mm

PU

Article no.

Pipe cutter

With the handy pistol shape, already laid pipes can be quickly and easily shortened. Pumping movements release the ratchet mechanism and the strong interchangeable blade is pushed through the material to be cut with minimal effort. The blade symmetry provides precise right angle cuts without burrs or deformation.

Area of application:

- Hard and soft plastics
- Rubber hoses
- Isoflex pipes
- Hard and soft plastic PVC pipes

**SUPER pipe cutter**

new, reinforced design

Working range 6 - 35 mm ø

1

12 0410

Replacement blade

1

12 0412

**MAXI pipe cutter**

with adjustment-lever for modification of cut-opening

Working range 6 - 42 mm ø

1

12 0420

Replacement blade

1

12 0422

MINI plastic pipe shears

made of die cast magnesium, for cutting plastic and composite pipes up to a diameter of 35 mm.

Optimum power transmission, with quick change system for changing blades simply and easily. Automatic blade retraction. Blade of PTFE-coated INOX steel with long service life (made in Solingen).

Extremely light and compact, only 270 g.



35 mm ø / 1 3/8"

220

1

12 0416

Replacement blade

1

12 0417

Plastic pipe cutter PROFI

made of die cast magnesium, for cutting plastic and composite pipes up to a diameter of 42 mm.

Optimum power transmission thanks to ratchet mechanism with progressive, gear driven blade feed with 2-component handle. Blade retraction via one-hand quick retraction mechanism. With quick change system for replacing blades quickly and easily. Blade of PTFE-coated INOX steel with long service life (made in Solingen).



42 mm ø / 1 5/8"

240

1

12 0418

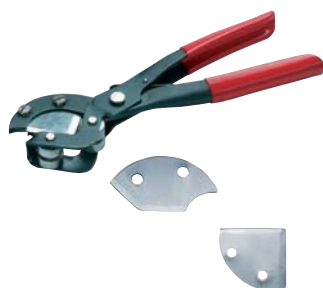
Replacement blade

1

12 0419

Universal pipe cutter

with 2 interchangeable knives for insulation and hard PVC pipes and for soft plastic and rubber hoses



Pipe outer ø max. 29 mm

200

1

12 0450

Bulk knives

for hard PVC

1

12 0452

for soft pipes

1

12 0453

Corrugated pipe cutter

for cutting and trimming corrugated plastic tubes (flex tubes) and plastic shield tubes up to 42 mm ø in the electrical, plumbing and heating fields, simply rotate the tool to safely cut at the outer diameter without damaging the interior pipe, with two interchangeable cutting inserts, weight only 45 g



Working range to 42 mm ø

110

1

12 0430

Replacement cutting inserts

1 pair

12 0432

Design	Size mm	PU	Article no.		
--------	---------	----	-------------	--	--

Ratchet pipe cutter

innovative pipe cutter with a worldwide patent. Ratchet mechanism allows you to cut a pipe without having to completely rotate the pipe to be cut. Especially suitable for work in restricted working spaces (e.g., pipes installed in corners or on walls). One-hand operation. Especially high performance. Thanks to special cutting wheel and double roller guides (speed, durability). Integrated deburrer for clean edges on the cut pipes. Easily interchangeable cutting wheel. One replacement cutting wheel is contained in the scope of delivery.

Weight 400 g. For plastic, copper, aluminium, and similar pipes.

For outer pipe diameters ranging from 12 to 35 mm ($\frac{1}{4}$ " to $1 \frac{3}{8}$ ").



	175 x 38 x 68	1	12 0480		
Replacement cutting wheel		1	12 0481		

Hole and disc cutter

for manual operation, with scale, for rubber, leather, plastic, etc., two knives also provide ring cutouts

400 mm ø		1	12 0834		
----------	--	---	---------	--	--



Hole punch for trapezoidal sheets

for trapezoidal sheets up to 1.2 mm thick and for a cutting width up to 100 mm. Depth stop adjustable from 35 mm – 105 mm. Tempered punching die fitted with formed ejection springs.

with hole diameter 10 mm	700	1	10 1570		
Punching die with ejection springs		1	10 1571		



SCREW PUNCHERS, PLATE PUNCHERS

First class

100 % Made in Germany!

All tools made of particularly tough special steel for a long working life.



Well planned

Special cutting geometry for light first cut and speedy punching.

Little force required due to tapered, relieved blades. Die with crosshairs for improved positioning.



Innovative

DIAMANT/ DIAMANT-VA round punchers split the scrap piece into three parts. Shaped punches with lateral ejectors for the scrap part.



Practical

For manual and hydraulic use. All tools and accessory parts can be ordered individually – no packaged units.



All punching tools are 100% compatible with the systems of other manufacturers. Special punchers can be produced at short notice if dimensions are provided.

Design	Size mm	PU	Article no.
--------	---------	----	-------------

DIAMANT screw puncher

innovative splitting punch with three cutting tips: punched waste is split into three parts.

Suitable for: steel sheets (ST 37), plastic and aluminium. Operation: manual and hydraulic

Design: with punch, die, tension bolt with ball bearing (encapsulated)

Nominal size	Nominal size	Hole ø	Bolt	Pre-drill ø	Max. material		
PG	metric	mm	Size mm	mm	thickness mm		
	12	12.5	6.0 x 40.0	6.5	1.5	1	13 2500
	16	16.2	9.5 x 50.0	10.0	2.0	1	13 2502
13	20	20.4	9.5 x 50.0	10.0	2.0	1	13 2504
	25	25.4	9.5 x 50.0	10.0	2.0	1	13 2506
	32	32.5	19.0 x 55.0	20.4*	3.0	1	13 2508
	40	40.5	19.0 x 75.0	20.4*	3.0	1	13 2510
	50	50.5	19.0 x 75.0	20.4*	3.0	1	13 2512
	63	63.5	19.0 x 75.0	20.4*	3.0	1	13 2514

* 1. Pre-drill: ø 10.0 mm 2. Pre-punch: ø 20.4 mm

Nominal size	Nominal size	Hole ø	Bolt	Pre-drill ø	Max. material		
PG	metric	mm	Size mm	mm	thickness mm		
9		15.2	9.5 x 50.0	10.0	2.0	1	13 2518
11		18.6	9.5 x 50.0	10.0	2.0	1	13 2520
13	20	20.4	9.5 x 50.0	10.0	2.0	1	13 2504
16		22.5	9.5 x 50.0	10.0	2.0	1	13 2524
21		28.3	9.5 x 50.0	10.0	2.0	1	13 2526
29		37.0	19.0 x 55.0	20.4*	3.0	1	13 2528
36		47.0	19.0 x 75.0	20.4*	3.0	1	13 2530
42		54.0	19.0 x 75.0	20.4*	3.0	1	13 2532
48		60.0	19.0 x 75.0	20.4*	3.0	1	13 2534

* 1. Pre-drill: ø 10.0 mm 2. Pre-punch: ø 20.4 mm

Nominal size	Hole ø	Bolt	Pre-drill ø	Max. material		
Inches	mm	Size mm	mm	thickness mm		
1-7/32"	30.5	9.5 x 50.0	10.0	2.0	1	13 2536

DIAMANT screw puncher accessories

for bolt size 6.0 mm x 40 mm Size mm

Tension bolt with ball bearing	6.0 x 40	1	13 5010
Hydraulic bolt, complete	19.0 / 6.0	1	13 5012
Punch (with 6.0 mm thread)	12.5	1	13 2542
Die (for 6.0 mm bolt)	12.5	1	13 2544

for bolt size 9.5 mm x 50 mm

Tension bolt with ball bearing	9.5 x 50	1	13 5000
Hydraulic bolt	19.0 / 9.5	1	13 5002
Punch (with 9.5 mm thread)	15.2	1	13 2550
	16.2	1	13 2552
	18.6	1	13 2554
	20.4	1	13 2556
	22.5	1	13 2558
	25.4	1	13 2560
	28.3	1	13 2562
	30.5	1	13 2564
Die (for 9.5 mm bolt)	15.2	1	13 2566
	16.2	1	13 2568
	18.6	1	13 2570
	20.4	1	13 2572
	22.5	1	13 2574
	25.4	1	13 2576
	28.3	1	13 2578
	30.5	1	13 2580



Design	Size mm	PU	Article no.		
--------	---------	----	-------------	--	--

DIAMANT screw puncher accessories

for bolt size 19 mm x 55 mm

Tension bolt with ball bearing	19.0 x 55.0	1	13 5004	
Hydraulic bolt	19.0 x 120.0	1	13 5006	
Punch (with 19 mm thread)	32.5	1	13 2586	
	37.0	1	13 2588	
Die (for 19 mm bolt)	32.5	1	13 2590	
	37.0	1	13 2592	

for bolt size 19 mm x 75 mm

Tension bolt with ball bearing	19.0 x 75	1	13 5008	
Hydraulic bolt	19.0 x 120	1	13 5006	
Punch (with 19 mm thread)	40.5	1	13 2598	
	47.0	1	13 2600	
	50.5	1	13 2602	
	54.0	1	13 2604	
	60.0	1	13 2606	
	63.5	1	13 2608	
Die (for 19 mm bolt)	40.5	1	13 2610	
	47.0	1	13 2612	
	50.5	1	13 2614	
	54.0	1	13 2616	
	60.0	1	13 2618	
	63.5	1	13 2620	



DIAMANT screw puncher – VA

Innovative splitting punch with three cutting tips: punched waste is split into three parts.

Suitable for: stainless steel (VA), steel sheets (ST 37), plastic and aluminium. Operation: manual and hydraulic (we recommend the use of a hydraulic unit). Design: with splitting punch, die, without tension bolt

Nominal size	Nominal size	Hole ø	Bolt	Pre-drill ø	Max. material			
PG	metric	mm	Size mm	mm	thickness mm			
	16	16.2	11.1 x 60.0	11.5	2.5	1	13 2700	
13	20	20.4	11.1 x 60.0	11.5	2.5	1	13 2702	
	25	25.4	11.1 x 60.0	11.5	2.5	1	13 2704	
	32	32.5	19.0 x 55.0	20.4*	3.5	1	13 2706	
	40	40.5	19.0 x 75.0	20.4*	3.5	1	13 2708	
	50	50.5	19.0 x 75.0	20.4*	3.5	1	13 2710	
	63	63.5	19.0 x 75.0	20.4*	3.5	1	13 2712	

* 1. Pre-drill: ø 11.5 mm 2. Pre-punch: ø 20.4 mm

Nominal size	Nominal size	Hole ø	Bolt	Pre-drill ø	Max. material			
PG	metric	mm	Size mm	mm	thickness mm			
9		15.2	11.1 x 60.0	11.5	2.5	1	13 2714	
11		18.6	11.1 x 60.0	11.5	2.5	1	13 2716	
13	20	20.4	11.1 x 60.0	11.5	2.5	1	13 2702	
16		22.5	11.1 x 60.0	11.5	2.5	1	13 2720	
21		28.3	19.0 x 55.0	20.4*	3.5	1	13 2722	
29		37.0	19.0 x 55.0	20.4*	3.5	1	13 2724	
36		47.0	19.0 x 75.0	20.4*	3.5	1	13 2726	
42		54.0	19.0 x 75.0	20.4*	3.5	1	13 2728	
48		60.0	19.0 x 75.0	20.4*	3.5	1	13 2730	

* 1. Pre-drill: ø 11.5 mm 2. Pre-punch: ø 20.4 mm

Nominal size	Nominal size	Hole ø	Bolt	Pre-drill ø	Max. material			
PG	metric	mm	Size mm	mm	thickness mm			
1-7 / 32"		30.5	19 x 55	20.4*	3.5	1	13 2732	

* 1. Pre-drill: ø 11.5 mm 2. Pre-punch: ø 20.4 mm



Design	Size mm	PU	Article no.
--------	---------	----	-------------

DIAMANT screw puncher accessories – VA

for bolt size 11.1 mm x 60 mm

Tension bolt with ball bearing	11.1 x 60.0	1	13 5014
Hydraulic bolt, complete	19.0 / 11.1	1	13 5016
Punch (with 11.1 mm thread)	15.2	1	13 2734
	16.2	1	13 2736
	18.6	1	13 2738
	20.4	1	13 2740
	22.5	1	13 2742
	25.4	1	13 2744
Die (for 11.1 mm bolt)	15.2	1	13 2746
	16.2	1	13 2748
	18.6	1	13 2750
	20.4	1	13 2752
	22.5	1	13 2754
	25.4	1	13 2756

for bolt size 19 mm x 55 mm

Tension bolt with ball bearing	19.0 x 55.0	1	13 5004
Hydraulic bolt	19.0 x 120.0	1	13 5006
Punch (with 19 mm thread)	28.3	1	13 2758
	30.5	1	13 2760
	32.5	1	13 2762
	37.0	1	13 2764
Die (for 19 mm bolt)	28.3	1	13 2766
	30.5	1	13 2768
	32.5	1	13 2770
	37.0	1	13 2772

for bolt size 19 mm x 75 mm

Tension bolt with ball bearing	19.0 x 75.0	1	13 5008
Hydraulic bolt	19.0 x 120.0	1	13 5006
Punch (with 19 mm thread)	40.5	1	13 2774
	47.0	1	13 2776
	50.5	1	13 2778
	54.0	1	13 2780
	60.0	1	13 2782
	63.5	1	13 2784
Die (for 19 mm bolt)	40.5	1	13 2786
	47.0	1	13 2788
	50.5	1	13 2790
	54.0	1	13 2792
	60.0	1	13 2794
	63.5	1	13 2796

Round screw puncher BASIC

Suitable for: steel sheets (ST 37), plastic, and aluminium.

Operation: manual and hydraulic, punched waste is punched out in a single piece

Design: includes punch, die, and tension bolt with ball bearing (encapsulated)

Nominal size	Nominal size	Hole ø	Bolt	Pre-drill ø	Max. material		
PG	metric	mm	Size mm	mm	thickness mm		
	16	16.2	9.5 x 50.0	10.0	2.0	1	13 2300
13	20	20.4	9.5 x 50.0	10.0	2.0	1	13 2302
	25	25.4	9.5 x 50.0	10.0	2.0	1	13 2304
	32	32.5	9.5 x 50.0	10.0	2.0	1	13 2306
	40	40.5	19.0 x 55.0	20.4*	3.0	1	13 2308
	50	50.5	19.0 x 75.0	20.4*	3.0	1	13 2310
	63	63.5	19.0 x 75.0	20.4*	3.0	1	13 2312

* 1. Pre-drill: ø 10.0 mm 2. Pre-punch: ø 20.4 mm

Design	Size mm	PU	Article no.		
--------	---------	----	-------------	--	--

Round screw puncher BASIC

Nominal size	Nominal size	Hole ø	Bolt	Pre-drill ø	Max. material			
PG	metric	mm	Size mm	mm	thickness mm			
9		15.2	9.5 x 50.0	10.0	2.0	1	13 2318	
11		18.6	9.5 x 50.0	10.0	2.0	1	13 2320	
13	20	20.4	9.5 x 50.0	10.0	2.0	1	13 2302	
16		22.5	9.5 x 50.0	10.0	2.0	1	13 2324	
21		28.3	9.5 x 50.0	10.0	2.0	1	13 2326	
29		37.0	19.0 x 55.0	20.4*	3.0	1	13 2328	
36		47.0	19.0 x 75.0	20.4*	3.0	1	13 2330	
42		54.0	19.0 x 75.0	20.4*	3.0	1	13 2332	
48		60.0	19.0 x 75.0	20.4*	3.0	1	13 2334	

* 1. Pre-drill: ø 10.0 mm 2. Pre-punch: ø 20.4 mm

Nominal size	Hole ø	Bolt	Pre-drill ø	Max. material				
Inches	mm	Size mm	mm	thickness mm				
1-7 / 32"	30.5	9.5 x 50.0	10.0	2.0	1	13 2336		
	68.0	19.0 x 75.0	20.4*	3.0	1	13 2338		
2-3 / 4"	70.0	19.0 x 75.0	20.4*	3.0	1	13 2340		
3"	76.2	19.0 x 75.0	20.4*	3.0	1	13 2342		
3-1 / 8"	80.0	19.0 x 75.0	20.4*	3.0	1	13 2344		
	82.0	19.0 x 75.0	20.4*	3.0	1	13 2346		

* 1. Pre-drill: ø 10.0 mm 2. Pre-punch: ø 20.4 mm

BASIC screw puncher accessories

for bolt size 9.5 mm x 50 mm

Tension bolt with ball bearing	9.5 x 50.0	1	13 5000	
Hydraulic bolt	19.0 / 9.5	1	13 5002	
Punch (with 9.5 mm thread)	15.2	1	13 2354	
	16.2	1	13 2356	
	18.6	1	13 2358	
	20.4	1	13 2360	
	22.5	1	13 2362	
	25.4	1	13 2364	
	28.3	1	13 2366	
	30.5	1	13 2368	
	32.5	1	13 2370	
Die (for 9.5 mm bolt)	15.2	1	13 2374	
	16.2	1	13 2376	
	18.6	1	13 2378	
	20.4	1	13 2380	
	22.5	1	13 2382	
	25.4	1	13 2384	
	28.3	1	13 2386	
	30.5	1	13 2388	
	32.5	1	13 2390	

for bolt size 19 mm x 55 mm

Tension bolt with ball bearing	19.0 x 55.0	1	13 5004	
Hydraulic bolt	19.0 x 120.0	1	13 5006	
Punch (with 19 mm thread)	37.0	1	13 2396	
	40.5	1	13 2398	
Die (for 19 mm bolt)	37.0	1	13 2400	
	40.5	1	13 2402	



Design	Size mm	PU	Article no.
--------	---------	----	-------------

BASIC screw puncher accessories

for bolt size 19 mm x 75 mm

Tension bolt with ball bearing	19.0 x 75.0	1	13 5008
Hydraulic bolt	19.0 x 120.0	1	13 5006
Punch (with 19 mm thread)	47.0	1	13 2408
	50.5	1	13 2410
	54.0	1	13 2412
	60.0	1	13 2414
	63.5	1	13 2416
	68.0	1	13 2418
	70.0	1	13 2420
	76.2	1	13 2424
	80.0	1	13 2426
	82.0	1	13 2428
Die (for 19 mm bolt)	47.0	1	13 2430
	50.5	1	13 2432
	54.0	1	13 2434
	60.0	1	13 2436
	63.5	1	13 2438
	68.0	1	13 2440
	70.0	1	13 2442
	76.2	1	13 2446
	80.0	1	13 2448
	82.0	1	13 2450

DIAMANT screw puncher sets

As an option with five or seven different sizes.

Suitable for: steel sheets (ST 37), plastic and aluminium. Operation: manual and hydraulic

Design: consists of splitting punches and dies. Storage: in practical, strong plastic case

Design	Nominal size metric mm	max. material thickness mm
	16	2.0
	20	2.0
	25	2.0
	32	2.0
	40	3.0
5 piece		
	16	2.0
	20	2.0
	25	2.0
	32	2.0
	40	3.0
	50	3.0
	63	3.0
7 piece		

Additional equipment: tension bolt with ball bearing (encapsulated), pre-drill and assembly paste

Design	Nominal size metric mm	max. material thickness mm
	12	1.5
	16	2.0
	20	2.0
	25	2.0
	32	2.0
	40	3.0
11 piece		
	16	2.0
	20	2.0
	25	2.0
	32	2.0
	40	3.0
	50	3.0
	63	3.0
13 piece		



Design	Size mm	PU	Article no.		
--------	---------	----	-------------	--	--

DIAMANT screw puncher sets

12-piece screw puncher sets including hand-held punch and accessories. As an option, with straight hand-held punch or 90° angled hand-held punch.

Suitable for: steel sheets (ST 37), plastic and aluminium. Operation: hydraulic

Design: consists of five splitting punches and dies; hydraulic bolts (2 pieces), pre-drill and spacer sleeve set (3-piece). Storage: in practical, strong plastic case

Contains straight hydraulic hand-held punch

Design	Nominal size	max. material thickness			
	metric mm	mm			
	16	2.0			
	20	2.0			
	25	2.0			
	32	2.0			
	40	3.0			
12-piece			1	13 3012	

Contains 90° angled hand-held punch, can be rotated 360°

Design	Nominal size	max. material thickness			
	metric mm	mm			
	16	2.0			
	20	2.0			
	25	2.0			
	32	2.0			
	40	3.0			
12-piece			1	13 3014	

12-piece screw puncher set accessories

Individual parts

Hydraulic bolt, complete	19.0 / 9.5	1	13 5002	
Hydraulic bolt	19.0 x 120.0	1	13 5006	
Spacer sleeve set (3-piece)		1	13 5072	
Pre-drill	10.0	1	13 4026	

DIAMANT screw puncher sets – VA

Screw puncher sets consisting of splitting punches and dies: options for five or seven different sizes.

Suitable for: stainless steel (VA), steel sheets (ST 37), plastic and aluminium. Operation: manual and hydraulic (we recommend the use of a hydraulic unit)

Design: consists of splitting punches and dies. Storage: in practical, strong plastic case

Design	Nominal size	max. material thickness			
	metric mm	mm			
	16	2.5			
	20	2.5			
	25	2.5			
	32	3.5			
	40	3.5			
5-piece			1	13 3004	
	16	2.5			
	20	2.5			
	25	2.5			
	32	3.5			
	40	3.5			
	50	3.5			
	63	3.5			
7 piece			1	13 3006	



Design

Size mm

PU

Article no.

DIAMANT screw puncher sets – VA

12-piece screw puncher sets including hand-held punch and accessories. As an option, with straight hand-held punch or 90° angled hand-held punch.

Suitable for: stainless steel (VA), steel sheets (ST 37), plastic and aluminium. Operation: hydraulic

Design: consists of five splitting punches and dies; hydraulic bolts (2 pieces), pre-drill and spacer sleeve set (3-piece). Storage: in practical, strong plastic case

Contains straight hydraulic hand-held punch



Design	Nominal size metric mm	max. material thickness mm
	16	2.5
	20	2.5
	25	2.5
	32	3.5
	40	3.5

12-piece			1	13 3016
----------	--	--	---	---------

Contains hydraulic 90° angled hand-held punch, can be rotated 360°



Design	Nominal size metric mm	max. material thickness mm
	16	2.5
	20	2.5
	25	2.5
	32	3.5
	40	3.5

12-piece			1	13 3018
----------	--	--	---	---------

12-piece screw puncher set accessories

Individual parts

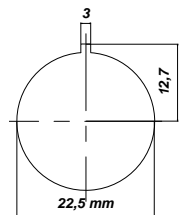
Hydraulic bolt, complete	19.0 / 11.1	1	13 5016
Hydraulic bolt	19.0 x 120.0	1	13 5006
Spacer sleeve set (3-piece)		1	13 5072
Pre-drill	11.5	1	13 4030

**Round and groove screw puncher**

Patented die: with lateral scrap part ejector. Hole punching design with 3 mm stud: for anti-rotation locking of pushbuttons and switches. Suitable for:

steel sheet (ST 37), plastic and aluminium. Operation: manual and hydraulic

Design: with punch, die, tension bolt with ball bearing (encapsulated), counter nut and adapter for hydraulic operation. Storage: in a practical, strong plastic case



Nominal size ø	Pre-drill ø mm	max. material thickness mm
22.5 mm with 3 mm stud	14.0	2.0

			1	13 2800
--	--	--	---	---------

Round and groove screw puncher accessories

Individual parts

Tension bolt with ball bearing		1	13 5018
Counter nut		1	13 5020
Screw-down nut		1	13 5022
Adapter for hydraulics		1	13 5024
Punch	22.5 - 3.2 - 25.4	1	13 2802
Die	22.5 - 3.2 - 25.4	1	13 2804

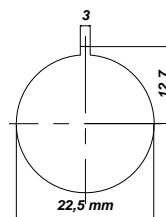


Design	Size mm	PU	Article no.		
--------	---------	----	-------------	--	--

Round and groove screw puncher VA

With lateral ejector for the scrap part, supplied in a plastic case, suitable for hydraulic operation, stainless steel sheets (VA) and steel sheets (ST 37). Hole punch design with stud. For anti-rotation locking of pushbuttons and switches.

Nominal size ø	Pre-drill ø mm	max. material thickness mm			
22.5 mm with 3 mm stud	14.0	2.0	1	13 2801	



Round and groove screw puncher VA accessories

Tension bolt with ball bearing		1	13 5018	
Counter nut		1	13 5020	
Screw-down nut		1	13 5022	
Adapter for hydraulics		1	13 5024	
Punch	22.5 - 3.2 - 25.4	1	13 2803	
Die	22.5 - 3.2 - 25.4	1	13 2804	

Rectangular screw puncher

Patented die: with lateral scrap part ejector.

Suitable for: steel sheets (ST 37), plastic and aluminium. Operation: manual and hydraulic

Design: with punch, die, tension bolt with ball bearing (encapsulated), counter nut and adapter for hydraulic operation. Storage: in a practical, strong plastic case

Nominal size ø	Pre-drill ø mm	max. material thickness mm			
17.0 x 19.0	14.0	2.0	1	13 2806	
21.8 x 25.8	17.0	2.0	1	13 2808	
22.0 x 30.0	17.0	2.0	1	13 2810	
22.0 x 42.0	17.0	2.0	1	13 2811	
25.0 x 50.0	17.0	2.0	1	13 2812	



Rectangular screw puncher accessories

Individual parts

Tension bolt with ball bearing		1	13 5028	
Counter nut		1	13 5020	
Screw-down nut		1	13 5022	
Adapter for hydraulics		1	13 5024	
Punch	17.0 x 19.0	1	13 2818	
Die	17.0 x 19.0	1	13 2828	



Rectangular screw puncher accessories

Individual parts

Tension bolt with ball bearing		1	13 5021	
Counter nut		1	13 5020	
Screw-down nut		1	13 5030	
Adapter for hydraulics		1	13 5032	
Punch	21.8 x 25.8	1	13 2820	
Punch	22.0 x 30.0	1	13 2822	
Punch	22.0 x 42.0	1	13 2824	
Die	21.8 x 25.8	1	13 2830	
Die	22.0 x 30.0	1	13 2832	
Die	22.0 x 42.0	1	13 2834	
Counter nut		1	13 5046	
Punch	25.0 x 50.0	1	13 2826	
Die	25.0 x 50.0	1	13 2836	



	Design	Size mm	PU	Article no.
--	--------	---------	----	-------------

Rectangular screw puncher

Patented die: with lateral scrap part ejector.

Suitable for: steel sheets (ST 37), plastic and aluminium. Operation: hydraulic

Design: with punch, die, hydraulic bolt and counter nut

Storage: in a practical, strong plastic case



Nominal size ø	Pre-drill ø	max. material thickness		
	mm	mm		
45.0 x 92.0	24.0	2.0	1	13 2813
46.0 x 92.0	24.0	2.0	1	13 2814
68.0 x 138.0	30.0*	3.0	1	13 2816

*Only in combination with CIMCO article no. 13 4022 or adapter 13 5088

Rectangular screw puncher accessories

Individual parts				
Hydraulic bolt			1	13 5034
Counter nut			1	13 5036
Punch	45.0 x 92.0		1	13 2837
Punch	46.0 x 92.0		1	13 2838
Die	45.0 x 92.0		1	13 2841
Die	46.0 x 92.0		1	13 2842
Hydraulic bolt			1	13 5038
Counter nut			1	13 5040
Punch	68.0 x 138.0		1	13 2840
Die	68.0 x 138.0		1	13 2844

Square screw puncher

Patented die: with lateral scrap part ejector.

Suitable for: steel sheets (ST 37), plastic and aluminium. Operation: manual and hydraulic

Design: with punch, die, tension bolt with ball bearing (encapsulated), counter nut and adapter for hydraulic operation. Storage: in a practical, strong plastic case



Nominal size ø	Pre-drill ø	max. material thickness		
	mm	mm		
12.7 x 12.7	10.0	1.75	1	13 2846
15.8 x 15.8	10.0	1.75	1	13 2848
19.0 x 19.0	14.0	2.00	1	13 2850
22.2 x 22.2	14.0	2.00	1	13 2852
24.0 x 24.0	14.0	2.00	1	13 2854
25.4 x 25.4	17.0	2.00	1	13 2856

Square screw puncher accessories

Individual parts				
Tension bolt with ball bearing			1	13 5042
Counter nut			1	13 5044
Screw-down nut			1	13 5022
Adapter for hydraulics			1	13 5024
Punch	12.7 x 12.7		1	13 2872
Punch	15.8 x 15.8		1	13 2874
Die	12.7 x 12.7		1	13 2884
Die	15.8 x 15.8		1	13 2886
Tension bolt with ball bearing			1	13 5028
Counter nut			1	13 5020
Screw-down nut			1	13 5022
Adapter for hydraulics			1	13 5024
Punch	19.0 x 19.0		1	13 2876
Punch	22.2 x 22.2		1	13 2878
Punch	24.0 x 24.0		1	13 2880
Die	19.0 x 19.0		1	13 2888
Die	22.2 x 22.2		1	13 2890
Die	24.0 x 24.0		1	13 2892



Design	Size mm	PU	Article no.		
--------	---------	----	-------------	--	--

Square screw puncher accessories

Tension bolt with ball bearing		1	13 5021	
Counter nut		1	13 5020	
Screw-down nut		1	13 5030	
Adapter for hydraulics		1	13 5032	
Punch	25.4 x 25.4	1	13 2882	
Die	25.4 x 25.4	1	13 2894	



Square screw puncher

Patented die: with lateral scrap part ejector.

Suitable for: steel sheets (ST 37), plastic and aluminium. Operation: hydraulic. Design: with punch, die, hydraulic bolt and counter nut. Storage: in a practical, strong plastic case

Nominal size ø	Pre-drill ø mm	max. material thickness mm		
45.5 x 45.5	20.0	3.0	1	13 2858
46.0 x 46.0	20.0	3.0	1	13 2860
50.8 x 50.8	24.0	3.0	1	13 2862
68.0 x 68.0	24.0	3.0	1	13 2864
92.0 x 92.0	30.0*	3.0	1	13 2866
125.0 x 125.0	30.0*	3.0	1	13 2868
138.0 x 138.0	30.0*	3.0	1	13 2870

*Only in combination with CIMCO article no. 13 4022 or adapter 13 5088



Square screw puncher accessories

Individual parts

Hydraulic bolt		1	13 5048	
Counter nut		1	13 5050	
Punch	45.5 x 45.5	1	13 2896	
Punch	46.0 x 46.0	1	13 2898	
Die	45.5 x 45.5	1	13 2910	
Die	46.0 x 46.0	1	13 2912	
Hydraulic bolt		1	13 5034	
Counter nut		1	13 5050	
Punch	50.8 x 50.8	1	13 2900	
Die	50.8 x 50.8	1	13 2914	
Hydraulic bolt		1	13 5034	
Counter nut		1	13 5036	
Punch	68.0 x 68.0	1	13 2902	
Die	68.0 x 68.0	1	13 2916	
Hydraulic bolt		1	13 5038	
Counter nut		1	13 5036	
Punch	92.0 x 92.0	1	13 2904	
Die	92.0 x 92.0	1	13 2918	
Hydraulic bolt		1	13 5038	
Counter nut		1	13 5054	
Punch	125.0 x 125.0	1	13 2906	
Punch	138.0 x 138.0	1	13 2908	
Die	125.0 x 125.0	1	13 2920	
Die	138.0 x 138.0	1	13 2922	



Design	Size mm	PU	Article no.
Square screw puncher - VA Patented die: with lateral scrap part ejector. Suitable for: stainless steel (VA steel) and steel sheets (ST 37). Operation: hydraulic. Design: with punch, die, hydraulic bolt and counter nut. Storage: in a practical, strong plastic case			
Nominal size ø	Pre-drill ø	max. material thickness	
	mm	mm	
46.0 x 46.0	20.0	2.0	1 13 2861
68.0 x 68.0	24.0	2.0	1 13 2865
92.0 x 92.0	30.0*	2.0	1 13 2867

*Only in combination with CIMCO article no. 13 4022 or adapter 13 5088

Square screw puncher VA accessories

Individual parts

Hydraulic bolt		1	13 5048
Counter nut		1	13 5050
Punch	46.0 x 46.0	1	13 2899
Die	46.0 x 46.0	1	13 2912

Hydraulic bolt		1	13 5034
Counter nut		1	13 5036
Punch	68.0 x 68.0	1	13 2903
Die	68.0 x 68.0	1	13 2916

Hydraulic bolt		1	13 5038
Counter nut		1	13 5036
Punch	92.0 x 92.0	1	13 2905
Die	92.0 x 92.0	1	13 2918

Screw puncher Sub-Min-D

Patented die: with lateral scrap part ejector. Suitable for: steel sheets (ST 37) and stainless steel (VA steel).

Operation: manual and hydraulic. Design: for multiple plug-in connectors, with punch, die, tension bolt, counter nut, screw-down nut with ball bearing (encapsulated) and adapter for hydraulic operation

Storage: in a practical, strong plastic case

Number of pins	Nominal size	Pre-drill	max. matl thickness mm		
	mm	mm	ST 37 / VA		
9	19.8 x 11.3	10.0	2.00 / 1.50	1	13 2924
15	28.2 x 11.3	10.0	2.00 / 1.50	1	13 2926
25	41.9 x 11.3	10.0	1.75 / 1.25	1	13 2928
37	58.4 x 11.3	10.0	1.75 / 1.25	1	13 2930
50	55.7 x 13.9	10.0	1.65 / 1.00	1	13 2932

Sub-Min-D screw punch accessories

Individual parts

Tension bolt		1	13 5056
Counter nut		1	13 5058
Screw-down nut		1	13 5022
Adapter/hydraulics		1	13 5024
Punch	20.0 x 11.9	1	13 2934
Die	20.0 x 11.9	1	13 2944

Tension bolt		1	13 5056
Counter nut		1	13 5060
Screw-down nut		1	13 5022
Adapter/hydraulics		1	13 5024
Punch	28.6 x 11.9	1	13 2936
Die	28.6 x 11.9	1	13 2946

Design	Size mm	PU	Article no.		
--------	---------	----	-------------	--	--

Sub-Min-D screw punch accessories

Individual parts

Tension bolt		1	13 5056	
Counter nut		1	13 5062	
Screw-down nut		1	13 5022	
Adapter/hydraulics		1	13 5024	
Punch	42.0 x 11.9	1	13 2938	
Die	42.0 x 11.9	1	13 2948	

Tension bolt		1	13 5056	
Counter nut		1	13 5064	
Screw-down nut		1	13 5022	
Adapter/hydraulics		1	13 5024	
Punch	58.3 x 11.9	1	13 2940	
Die	58.3 x 11.9	1	13 2950	

Tension bolt		1	13 5056	
Counter nut		1	13 5066	
Screw-down nut		1	13 5022	
Adapter/hydraulics		1	13 5024	
Punch	55.9 x 14.7	1	13 2942	
Die	55.9 x 14.7	1	13 2952	

Special screw puncher for heavy-duty plug-in connectors

Patented die: with lateral scrap part ejector. Drilling position is marked out by the die using centre punches:

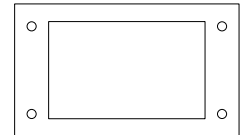
centre punches can be exchanged or wound back using 2.5 mm hex keys.

There is therefore no need to mark out the centre marking. Suitable for: steel sheets (ST 37), plastic and aluminium.

Operation: hydraulic. Design: with punch, die, hydraulic bolt and counter nut.

Storage: in practical, strong plastic case

Number of pins	Nominal size mm	Pre-drill mm	max. matl thickness mm ST 37 / VA		
6	52.0 x 36.0	24.0	2.0	1	13 2954
10	65.0 x 36.0	24.0	2.0	1	13 2956
16	86.0 x 36.0	24.0	2.0	1	13 2958
24	112.0 x 36.0	24.0	2.0	1	13 2960



Special screw puncher accessories

Individual parts

Hydraulic bolt		1	13 5034	
Counter nut		1	13 5050	
Punch	52.0 x 36.0	1	13 2962	
Die	52.0 x 36.0	1	13 2970	

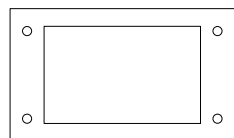
Hydraulic bolt		1	13 5034	
Counter nut		1	13 5050	
Punch	65.0 x 36.0	1	13 2964	
Die	65.0 x 36.0	1	13 2972	

Hydraulic bolt		1	13 5034	
Counter nut		1	13 5050	
Punch	86.0 x 36.0	1	13 2966	
Die	86.0 x 36.0	1	13 2974	

Hydraulic bolt		1	13 5034	
Counter nut		1	13 5070	
Punch	112.0 x 36.0	1	13 2968	
Die	112.0 x 36.0	1	13 2976	



	Design	Size mm	PU	Article no.
--	--------	---------	----	-------------



Special screw puncher VA for heavy-duty plug-in connectors

Patented die: with lateral scrap part ejector. Drilling position is marked out by the die using centre punches: centre punches can be exchanged or wound back using 2.5 mm hex keys. There is therefore no need to mark out the centre marking. Suitable for: stainless steel (VA steel) and steel sheets (ST 37). Operation: hydraulic.

Design: with punch, die, hydraulic bolt and counter nut.

Storage: in a practical, strong plastic case



Number of pins	Nominal size mm	Pre-drill max. material thickness mm	ST 37 / VA		
6	52.0 x 36.0	24.0	2.0	1	13 2980
10	65.0 x 36.0	24.0	2.0	1	13 2982
16	86.0 x 36.0	24.0	2.0	1	13 2984
24	112.0 x 36.0	24.0	2.0	1	13 2986

Special screw puncher VA accessories

Hydraulic bolt		1	13 5034
Counter nut		1	13 5050
Punch	52.0 x 36.0	1	13 2990
Die	52.0 x 36.0	1	13 2970

Hydraulic bolt		1	13 5034
Counter nut		1	13 5070
Punch	65.0 x 36.0	1	13 2992
Die	65.0 x 36.0	1	13 2972

Hydraulic bolt		1	13 5034
Counter nut		1	13 5050
Punch	86.0 x 36.0	1	13 2994
Die	86.0 x 36.0	1	13 2974

Hydraulic bolt		1	13 5034
Counter nut		1	13 5070
Punch	112.0 x 36.0	1	13 2996
Die	112.0 x 36.0	1	13 2976



Image video
Hole punching technology

Hydraulic battery-operated punch

practical hand-held hydraulic tool with high performance rechargeable 18 V battery, for round, rectangular and square punching in control cabinets and plant construction. With pressure relief valve, high-power drive motor, high tensile strength aluminium head, weight including battery only 3.7 kg, ergonomically designed two-component handle, rechargeable battery packs can be inserted from either of two sides:



battery insertion from front
ensures a stable position



battery insertion from back
for space-saving operation



- Punching force: 70 kN with pressure relief valve
- Battery: charging time: 45 minutes after full discharge
- Battery charger: will charge all rechargeable 18 – 28 V batteries, compatible with NiCD, NiMH and Li-Ion batteries,
- Automatic temperature monitoring, charge condition on LED display
- Supplied in a strong plastic case: battery operated hand-held hydraulic unit, two 18 V rechargeable batteries, 18 – 28 V battery charger, two hydraulic bolts, spacer sleeve set (3-piece), pre-drill 11.0 mm, operating instructions

Hydraulic battery-operated punch with accessories	1	13 4012
Rechargeable battery	1	13 4014

Design	Size mm	PU	Article no.	
--------	---------	----	-------------	--

Hydraulic hand-held punches

Practical hand-held punch for round, rectangular and square punching in control cabinets and plant construction.

Pressure relief valve provides safety function: pressure switched off automatically at 650 bar.

Made of high tensile strength aluminium (saving approx. 40% in weight), ergonomic handle – springs back by itself, one-handed operation means easier positioning of the die in the crosshairs. Punching force: 75 kN operating pressure max: 650 bar.

Hydraulic hand-held punch – straight design (1.6 kg)	1	13 4016	
--	---	---------	--

Hydraulic hand-held punch – angled 90°, can be rotated 360° (1.9 kg)	1	13 4018	
--	---	---------	--



Hydraulic punch with hand pump

Ideal in restricted spaces, for round, rectangular and square punching in control cabinets and plant construction.

Punching force: 75 kN with pressure relief valve

Operating pressure max: 650 bar

Weight: 2.0 kg

Supplied in strong plastic case: hydraulic punch with hand pump, hydraulic cylinder, hydraulic 600 mm hose, two hydraulic bolts, spacer sleeve set (3-piece), HSS pre-drill 11.0 mm

Hydraulic punch with hand pump	1	13 4020	
--------------------------------	---	---------	--



Hydraulic punch with foot pump

Ideal in restricted spaces, for round, rectangular and square punching in control cabinets and plant construction.

Keep both hands free for exact positioning and punching: splayed support stand ensures tip-proof operation

Punching force: 75 kN with pressure relief valve

Operating pressure max: 700 bar³

Tank volume: 270 cm

Usable oil volume: 210 cm

Flow rate: 1.7 cm per piston stroke

Supplied in a strong plastic case: foot pump, hydraulic cylinder with quick-fitting coupling, hydraulic hose 2.8 m, two hydraulic bolts, spacer sleeve set (5 pieces), pre-drill 11.0 mm

Hydraulic punch with foot pump	1	13 4022	
--------------------------------	---	---------	--



Hydraulic cylinder

For all electric, foot and hand-operated pumps with quick-fitting coupling and a maximum output pressure of 700 bar.

Compact construction, for punching round, rectangular and square holes as well as special shapes in stainless steel and steel sheets ST 37 (control cabinets and plant construction).

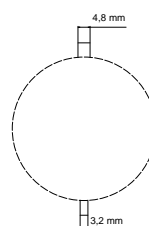
Hydraulic cylinder with quick-fitting coupling (up to 115 kN), high tensile strength aluminium body, suitable for tension bolts with UNF-thread, ø 19.0 mm, drip-free coupling and uncoupling, easy operation, with dust protector cap, supplied in a plastic case.

	1	13 4023	
--	---	---------	--



Keyway pliers

quickly and easily punches keyways in 2.0 mm steel sheets (ST 37), dispenses with time-consuming filing of grooves for anti-rotational locking, keyways possible in 3.2 mm and 4.8 mm size, interchangeable keyway punch, long operating life as punch and die are made of hardened tool steel, easy punching thanks to strong leverage transfer, weight 1.3 kg



Keyway pliers	1	13 4000	
Replacement punches in 3.2 mm and 4.8 mm	1	13 4002	

Design

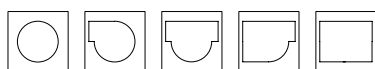
Size mm

PU

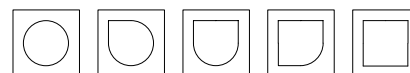
Article no.

Nibbler

Pre-punched round holes can easily and economically be converted to square or rectangular holes. Particularly recommended for producing unusual dimensions (special shapes).



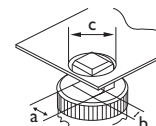
Round to rectangular



Round to square

Material thickness: max. 2.0 mm ST 37

Dimensions:	a	b	c	Pre-punch
ASN 15	15.0	6.5	21.5	21.5 mm ø
ASN 20	20.0	9.0	28.5	28.5 mm ø



Nibbler ASN15	1	13 4004
Nibbler ASN20	1	13 4006
Replacement punch ASN15	1	13 4008
Replacement punch ASN20	1	13 4010

Quick release nut

For shaped punch with thread shape UNF 19 mm, used as replacement for normal counter nut saving approx. 75% time in comparison to screw version. For quickly locking and unlocking on the thread, however screwing it on or off normally is ensured despite this even if it jams. The quick release nut is pushed onto the thread of the tension bolt and then when it touches the stamp, is latched onto lid. Pushing the lid back releases this latching on again.

Quick release nut without tension bolt	1	13 5026
--	---	---------

Screw puncher centring ring

Made of plastic. Ideal aid for tension bolts or hydraulic bolts in screw puncher systems.

For use in oversized drill holes, for example in control cabinets to centre tension bolts (screw puncher).

The centring ring can be used with all known screw puncher designs that split the scrap part, - including products from other manufacturers! Suitable for puncher systems that split into 2 or 3 pieces. The ring size 3 is suitable for 19 mm connecting bolts (UNF3/4-16) both in manual and also in hydraulic operation.

The ring in size 3 can be used for a hole diameter of 28 mm in the sheet to be processed.

The smallest hole diameter in which the ring will still link tool and workpiece is 20.4 mm.

	10	13 5080
--	----	---------

Individual parts for manual operation

Bolts for steel sheets ST 37

Tension bolt with ball bearing (encapsulated)	6.0 x 40.0	1	13 5010
Tension bolt with ball bearing (encapsulated)	9.5 x 50.0	1	13 5000

Bolts for stainless steel and steel sheets ST 37

Tension bolt with ball bearing (encapsulated)	19.0 x 55.0	1	13 5004
Tension bolt with ball bearing (encapsulated)	19.0 x 75.0	1	13 5008
Tension bolt with ball bearing	11.1 x 60.0	1	13 5014

Individual parts for hydraulic operation

Bolts for steel sheets ST 37

Hydraulic bolt, complete	19.0 / 9.5	1	13 5002
Hydraulic bolt 13 5002	9.5 x 75.0	1	13 5074
Adapter for hydraulic bolt 13 5002	19.0 x 38.0 (Inside: 9.5)	1	13 5024
Hydraulic bolt	19.0 x 120.0	1	13 5006

Bolts for stainless steel

Hydraulic bolt, complete	19.0 / 11.1	1	13 5016
Hydraulic bolt 13 5016	11.1 x 75.0	1	13 5076
Adapter for hydraulic bolt 13 5016	19.0 x 38.0 (Inside: 11.1)	1	13 5078
Hydraulic bolt	19.0 x 120.0	1	13 5006

Spacer sleeve set (3-piece)	1	13 5072
Hydraulic oil	1 Litre	13 4024



Design	Size mm	PU	Article no.		
--------	---------	----	-------------	--	--

Spacer sleeve set

when using tension bolts size 30.0 mm and above,
a set contains: tension bolt A0, long, spacer, two countersunk screws hex socket M 6 x 30,
two countersunk screws hex socket M 6 x 35

		1	13 5088		
--	--	---	---------	--	--



General accessories

Pre-drill	10.0	1	13 4026		
Pre-drill	11.0	1	13 4028		
Pre-drill	11.5	1	13 4030		
Step drill, holder shaft 10 mm ø	M12, M16, M20, M25, M32, M40	1	13 4032		
Assembly paste	120 g	1	13 4034		



Special step drill for screw punching

HSS step drill for burr-free drilling of through-holes for screw puncher tension bolts M 8 ($\frac{3}{8}$ ") – M 10 ($\frac{7}{16}$ ") – M 12 – M 16 – $\frac{3}{4}$ " – M 20 in material up to 4 mm thick. Suitable for use in hand and box column drills, total of 9 drill steps, holder shaft (ø 10 mm) with 3 driver carriers prevents slipping in the chuck.

		1	20 1212		
--	--	---	---------	--	--



Cable duct cutter

for cutting burr-free lengths without waste, for plastic conduits and covers, low force required for cutting,
foldable, sprung blade protection, fastening lugs for workbench mounting,
width of cutting blades up to 125 mm, laser engraved length stop up to 1000 mm

		1	13 4036		
--	--	---	---------	--	--



DIN profile cutter and punching tool

for cutting burr-free lengths without waste, for copper mounting rails, reduced force needed with reinforced eccentric,
laser-engraved length stop up to 1000 mm, hand operation for length cutting and punching in lengthways and crossways mode

Profile equipment: TS 35x15 – TS 35x7.5 – TS 15x5.5 – E-Cu 10x3.0 – C 15x34	13 4038				
---	---------	--	--	--	--

Profile equipment: TS 35x15 – TS 35x7.5 – TS 15x5.5 – E-Cu 10x3.0 – G 15x32	13 4040				
---	---------	--	--	--	--

TS 35 x 15 TS 35 x 15	TS 35 x 7,5 TS 35 x 7,5	TS 15 x 5,5 TS 15 x 5,5	E-Cu 10 x 3,0 E-Cu 10 x 3,0	C-Profil 15 x 34 C-Profil 3415	G-Profil 15 x 32 3- Profil EN 70615
--------------------------	----------------------------	----------------------------	--------------------------------	-----------------------------------	--

