

Assembly instructions for coupling and branch sleeve for control and supply lines



Quick and simple assembly makes mechanical coupling sleeves optimally suited as repair resp. connection or branch tee sleeve.

The purely mechanical cable joint box **TDM** with screw cap is available in two sizes and is used for the coupling of communication, control and supply lines with a cable diameter of 6 to 25 mm (suitable for up to four cables). Apart from this, underground cables can be connected quickly and securely.

- Watertight (IP 68)
- UV resistant
- Resistant to alkaline earths and rot
- Sleeve body made from impact-resistant plastic
- With lug for lead seal against unauthorised access (design TDM 1 and TDM 2)

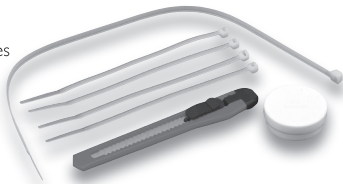
The cable joint box meets the ÖVE IM22 standard.

TDM 1 - CIMCO-item no. 18 4760

TDM 2 - CIMCO-item no. 18 4762

Scope of delivery:

- 1 Cable joint box
- 1 Grommet for 4 cables
- 1 Cap
- 4 Cable ties short
- 1 Cable tie long
- 1 Can of lubricant
- 1 Cutter knife



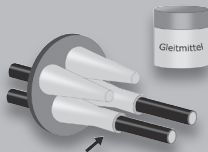
Spanner set (CIMCO-item no. 18 4764) for TDM 2 is not included in the scope of delivery and must be ordered separately!

Assembly:

The CIMCO cable joint boxes can also be protected with removable gel against the entry of water with cables that are not longitudinally watertight.

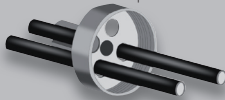
Step 3:

Guide cables through sealing grommets and fix with cable ties (use lubricant if necessary).



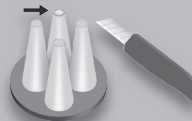
Step 1:

Clean cables and fit in the pre-punched holes of the screw cap.



Step 2:

Cut off sealing grommet opening to the size of half the cable diameter.



Step 4:

Screw together tightly



Step 5:

Attach lead seal to lug against unauthorised access (lead seal not included in scope of delivery).



Use a spanner to screw the TDM 2 sleeve together.



Step 6:

Fix cables and screw cap with cable ties (strain relief).



The installer is responsible for the proper assembly.


W E R K Z E U G F A B R I K

D-42855 Remscheid • www.cimco.de